

PLEASE CHECK [WWW.MOLEX.COM](http://WWW.MOLEX.COM) FOR LATEST PART INFORMATION

**Part Number:** [0022102051](#)  
**Status:** **Active**  
**Description:** 2.54mm (.100") Pitch KK® Wire-to-Board Header, Single Row, Vertical, 5 Circuits, PA Polyamide Nylon, Gold (Au) Plating

**Documents:**

<a href="#">3D Model</a>	<a href="#">Product Specification PS-10-07 (PDF)</a>
<a href="#">Packaging Specification (PDF)</a>	<a href="#">RoHS Certificate of Compliance (PDF)</a>
<a href="#">Drawing (PDF)</a>	

**Agency Certification**

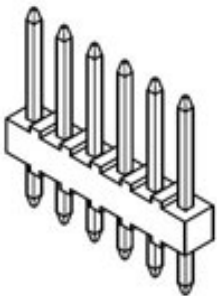
CSA	LR19980
UL	E29179

**General**

Product Family	PCB Headers
Series	<a href="#">4030</a>
Application	Board-to-Board, Wire-to-Board
Product Name	KK®

**Physical**

Breakaway	No
Circuits (Loaded)	5
Circuits (maximum)	5
Color - Resin	Natural (White)
Durability (mating cycles max)	100
Flammability	94V-0
Glow-Wire Compliant	No
Lock to Mating Part	None
Material - Metal	Brass
Material - Plating Mating	Gold
Material - Plating Termination	Gold
Material - Resin	Nylon
Number of Rows	1
Orientation	Vertical
PC Tail Length (in)	0.135 In
PC Tail Length (mm)	3.43 mm
PCB Locator	No
PCB Retention	None
PCB Thickness Recommended (in)	0.062 In
PCB Thickness Recommended (mm)	1.60 mm
Packaging Type	Bag
Pitch - Mating Interface (in)	0.100 In
Pitch - Mating Interface (mm)	2.54 mm
Plating min: Mating (µin)	20
Plating min: Mating (µm)	0.5
Plating min: Termination (µin)	20
Plating min: Termination (µm)	0.5
Polarized to Mating Part	No
Polarized to PCB	No
Shrouded	No
Stackable	Yes
Surface Mount Compatible (SMC)	No
Temperature Range - Operating	0°C to +75°C
Termination Interface: Style	Through Hole



Series

image - Reference only

**EU RoHS**

**ELV and RoHS  
Compliant**

**REACH SVHC**

Not Reviewed

**Halogen-Free**

**Status**

**Halogen-Free**

**China RoHS**



**Need more information on product  
environmental compliance?**

Email [productcompliance@molex.com](mailto:productcompliance@molex.com)  
For a multiple part number RoHS Certificate of  
Compliance, [click here](#)

Please visit the [Contact Us](#) section for any  
non-product compliance questions.

**Search Parts in this Series**

[4030Series](#)

**Mates With**

[2695](#) , [6471](#) , [7880](#) , [4455](#) , [7720](#)

**Electrical**

Current - Maximum per Contact	4A
Voltage - Maximum	250V

**Solder Process Data**

Duration at Max. Process Temperature (seconds)	5
Lead-free Process Capability	Wave Capable (TH only)
Max. Cycles at Max. Process Temperature	1
Process Temperature max. C	235

**Material Info**

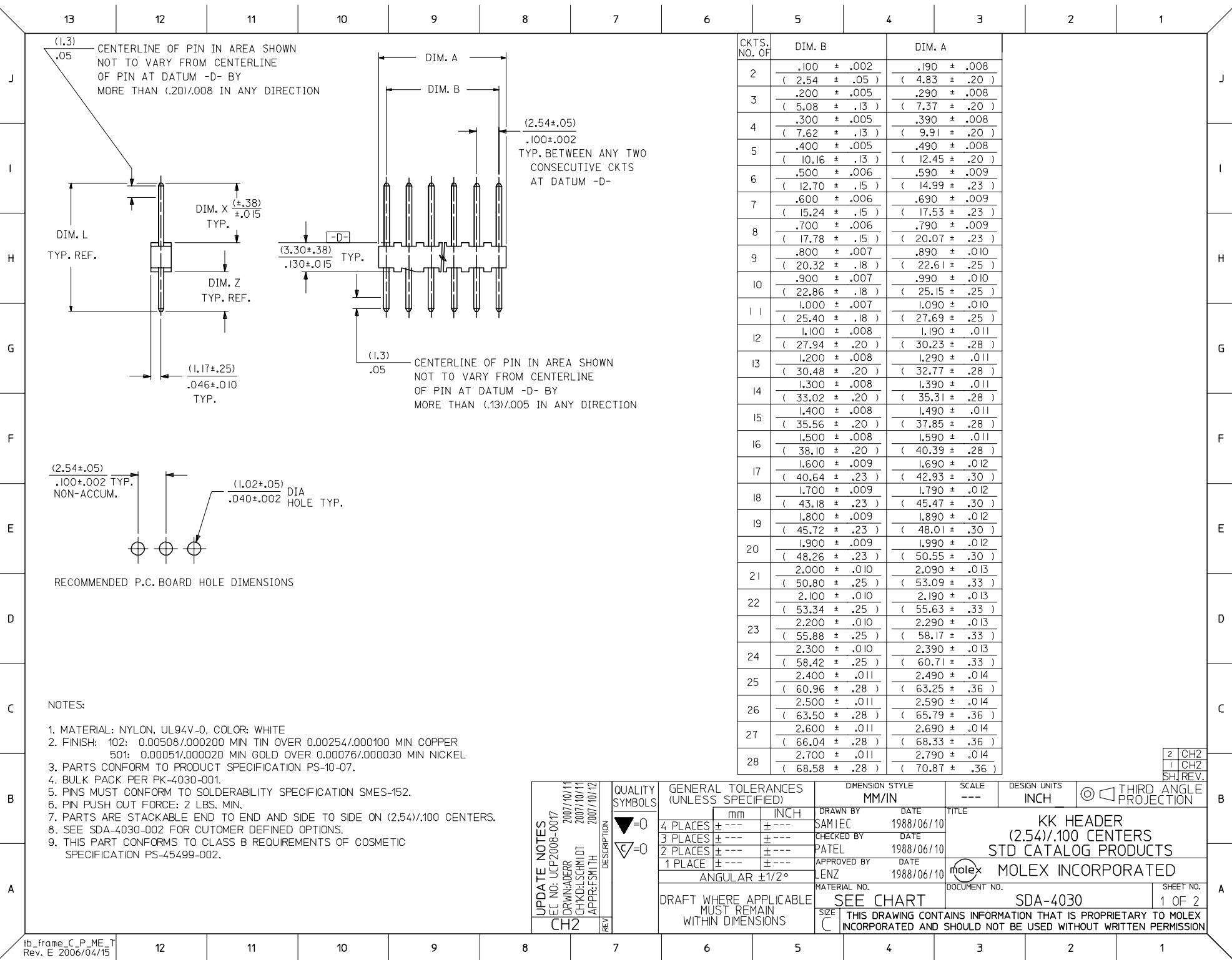
Old Part Number	A-4030-05A501
-----------------	---------------

**Reference - Drawing Numbers**

Product Specification	PS-10-07
Sales Drawing	SDA-4030

This document was generated on 04/09/2010

PLEASE CHECK [WWW.MOLEX.COM](http://WWW.MOLEX.COM) FOR LATEST PART INFORMATION



	13	12	11	10	9	8	7	6	5	4	3	2	1																																																								
J	ENG. NO.	PIN NO.	DIM. L	DIM. X	DIM. Z	PACKAGE PER	EDP NO. IN COL NO							J																																																							
	A-4030 -NA(102)	2766 -I(102)	.560 (14.22)	.295 (7.49 )	.135 (3.43 )	PK-4030-001 BULK	1																																																														
	A-4030 -NA(501)	2766 -I(501)	.560 (14.22)	.295 (7.49 )	.135 (3.43 )	PK-4030-001 BULK	2																																																														
I	A- -	-	( )	( )	( )																																																																
	A- -	-	( )	( )	( )																																																																
	A- -	-	( )	( )	( )																																																																
	A- -	-	( )	( )	( )																																																																
H														H																																																							
G														G																																																							
	COLUMN NO. 1		COLUMN NO. 2																																																																		
	EDP NO.	ENG. NO.	NO OF CKTS	EDP NO.	ENG. NO.	NO OF CKTS																																																															
F	22-03-2021	A-4030-02A(102)	2	22-10-2021	A-4030-02A(501)	2																																																															
	22-03-2031	A-4030-03A(102)	3	22-10-2031	A-4030-03A(501)	3																																																															
	22-03-2041	A-4030-04A(102)	4	22-10-2041	A-4030-04A(501)	4																																																															
	22-03-2051	A-4030-05A(102)	5	22-10-2051	A-4030-05A(501)	5								F																																																							
	22-03-2061	A-4030-06A(102)	6	22-10-2061	A-4030-06A(501)	6																																																															
	22-03-2071	A-4030-07A(102)	7	22-10-2071	A-4030-07A(501)	7																																																															
E	22-03-2081	A-4030-08A(102)	8	22-10-2081	A-4030-08A(501)	8																																																															
	22-03-2091	A-4030-09A(102)	9	22-10-2091	A-4030-09A(501)	9																																																															
	22-03-2101	A-4030-10A(102)	10	22-10-2101	A-4030-10A(501)	10								E																																																							
	22-03-2111	A-4030-11A(102)	11	22-10-2111	A-4030-11A(501)	11																																																															
	22-03-2121	A-4030-12A(102)	12	22-10-2121	A-4030-12A(501)	12																																																															
	22-03-2131	A-4030-13A(102)	13	22-10-2131	A-4030-13A(501)	13																																																															
D	22-03-2141	A-4030-14A(102)	14	22-10-2141	A-4030-14A(501)	14																																																															
	22-03-2151	A-4030-15A(102)	15	22-10-2151	A-4030-15A(501)	15																																																															
	22-03-2161	A-4030-16A(102)	16	22-10-2161	A-4030-16A(501)	16								D																																																							
	22-03-2171	A-4030-17A(102)	17	22-10-2171	A-4030-17A(501)	17																																																															
	22-03-2181	A-4030-18A(102)	18	22-10-2181	A-4030-18A(501)	18																																																															
	22-03-2191	A-4030-19A(102)	19	22-10-2191	A-4030-19A(501)	19																																																															
	22-03-2201	A-4030-20A(102)	20	22-10-2201	A-4030-20A(501)	20																																																															
C	22-03-2211	A-4030-21A(102)	21	22-10-2211	A-4030-21A(501)	21																																																															
	22-03-2221	A-4030-22A(102)	22	22-10-2221	A-4030-22A(501)	22																																																															
	22-03-2231	A-4030-23A(102)	23	22-10-2231	A-4030-23A(501)	23								C																																																							
	22-03-2241	A-4030-24A(102)	24	22-10-2241	A-4030-24A(501)	24																																																															
	22-03-2251	A-4030-25A(102)	25	22-10-2251	A-4030-25A(501)	25																																																															
	22-03-2261	A-4030-26A(102)	26	22-10-2261	A-4030-26A(501)	26																																																															
	22-03-2271	A-4030-27A(102)	27	22-10-2271	A-4030-27A(501)	27																																																															
B	22-03-2281	A-4030-28A(102)	28	22-10-2281	A-4030-28A(501)	28																																																															
A														A																																																							
<table><tr><td rowspan="10">UPDATE TITLE BLOCK EC NO: UCP2008-0017 2007/10/11 DRWN:ADERR CHKD:LSCHMIDT 2007/10/11 APPR:FSMITH 2007/10/12 CH2</td><td rowspan="10">QUALITY SYMBOLS  ▽=0 ▽=0</td><td colspan="2">GENERAL TOLERANCES (UNLESS SPECIFIED)</td><td colspan="2">DIMENSION STYLE IN/MM</td><td>SCALE ---</td><td>DESIGN UNITS INCH</td><td colspan="2">THIRD ANGLE PROJECTION</td></tr><tr><td>4 PLACES</td><td>± ---</td><td>± ---</td><td>DRAWN BY SAMIEC</td><td>DATE 1993/07/15</td><td colspan="4" rowspan="3">KK HEADER (2.54)/.100 CENTERS STD CATALOG PRODUCTS</td></tr><tr><td>3 PLACES</td><td>± ---</td><td>± ---</td><td>CHECKED BY PATEL</td><td>DATE 1993/07/15</td></tr><tr><td>2 PLACES</td><td>± ---</td><td>± ---</td><td>APPROVED BY LENZ</td><td>DATE 1993/07/15</td></tr><tr><td>1 PLACE</td><td>± ---</td><td>± ---</td><td colspan="2">ANGULAR ±1/2°</td><td colspan="2">MATERIAL NO.</td><td colspan="2">DOCUMENT NO.</td></tr><tr><td colspan="4">DRAFT WHERE APPLICABLE MUST REMAIN WITHIN DIMENSIONS</td><td colspan="2">SEE CHART</td><td colspan="2">SDA-4030</td><td colspan="2">SHEET NO. 2 OF 2</td></tr><tr><td>SIZE C</td><td colspan="7">THIS DRAWING CONTAINS INFORMATION THAT IS PROPRIETARY TO MOLEX INCORPORATED AND SHOULD NOT BE USED WITHOUT WRITTEN PERMISSION</td></tr></table>														UPDATE TITLE BLOCK EC NO: UCP2008-0017 2007/10/11 DRWN:ADERR CHKD:LSCHMIDT 2007/10/11 APPR:FSMITH 2007/10/12 CH2	QUALITY SYMBOLS  ▽=0 ▽=0	GENERAL TOLERANCES (UNLESS SPECIFIED)		DIMENSION STYLE IN/MM		SCALE ---	DESIGN UNITS INCH	THIRD ANGLE PROJECTION		4 PLACES	± ---	± ---	DRAWN BY SAMIEC	DATE 1993/07/15	KK HEADER (2.54)/.100 CENTERS STD CATALOG PRODUCTS				3 PLACES	± ---	± ---	CHECKED BY PATEL	DATE 1993/07/15	2 PLACES	± ---	± ---	APPROVED BY LENZ	DATE 1993/07/15	1 PLACE	± ---	± ---	ANGULAR ±1/2°		MATERIAL NO.		DOCUMENT NO.		DRAFT WHERE APPLICABLE MUST REMAIN WITHIN DIMENSIONS				SEE CHART		SDA-4030		SHEET NO. 2 OF 2		SIZE C	THIS DRAWING CONTAINS INFORMATION THAT IS PROPRIETARY TO MOLEX INCORPORATED AND SHOULD NOT BE USED WITHOUT WRITTEN PERMISSION						
UPDATE TITLE BLOCK EC NO: UCP2008-0017 2007/10/11 DRWN:ADERR CHKD:LSCHMIDT 2007/10/11 APPR:FSMITH 2007/10/12 CH2	QUALITY SYMBOLS  ▽=0 ▽=0	GENERAL TOLERANCES (UNLESS SPECIFIED)		DIMENSION STYLE IN/MM		SCALE ---	DESIGN UNITS INCH	THIRD ANGLE PROJECTION																																																													
		4 PLACES	± ---	± ---	DRAWN BY SAMIEC	DATE 1993/07/15	KK HEADER (2.54)/.100 CENTERS STD CATALOG PRODUCTS																																																														
		3 PLACES	± ---	± ---	CHECKED BY PATEL	DATE 1993/07/15																																																															
		2 PLACES	± ---	± ---	APPROVED BY LENZ	DATE 1993/07/15																																																															
		1 PLACE	± ---	± ---	ANGULAR ±1/2°		MATERIAL NO.		DOCUMENT NO.																																																												
		DRAFT WHERE APPLICABLE MUST REMAIN WITHIN DIMENSIONS				SEE CHART		SDA-4030		SHEET NO. 2 OF 2																																																											
		SIZE C	THIS DRAWING CONTAINS INFORMATION THAT IS PROPRIETARY TO MOLEX INCORPORATED AND SHOULD NOT BE USED WITHOUT WRITTEN PERMISSION																																																																		

1b_frame_C_P_ME_T Rev. E 2006/04/15	12	11	10	9	8	7	6	5	4	3	2	1
--	----	----	----	---	---	---	---	---	---	---	---	---