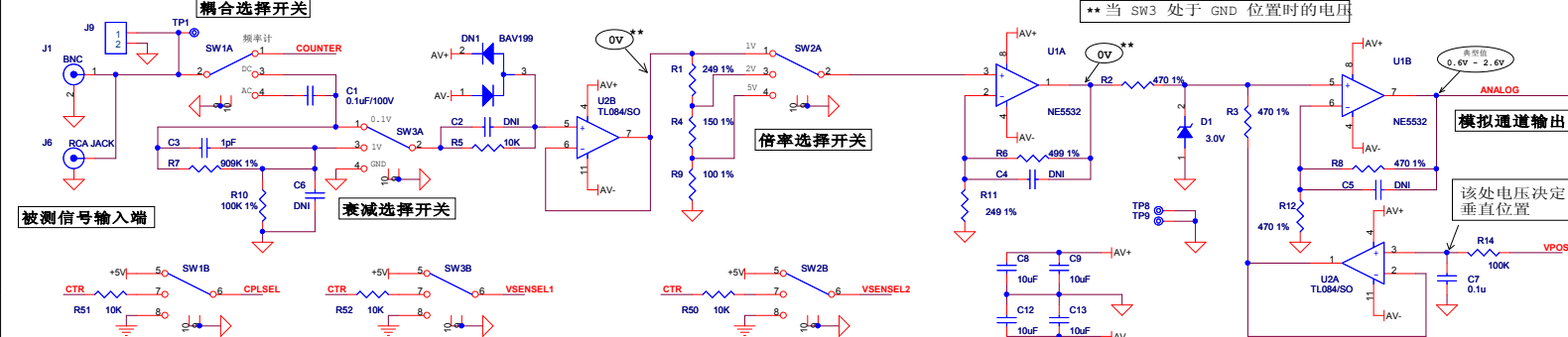
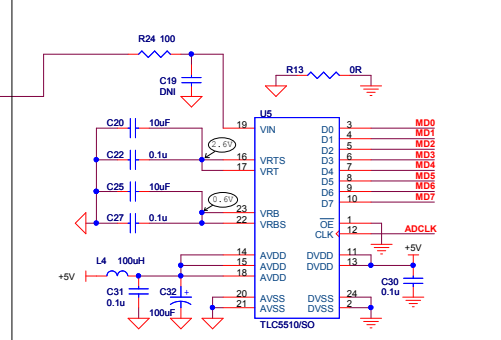


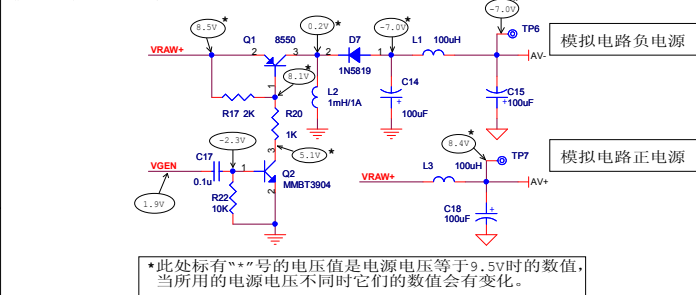
模拟通道前端



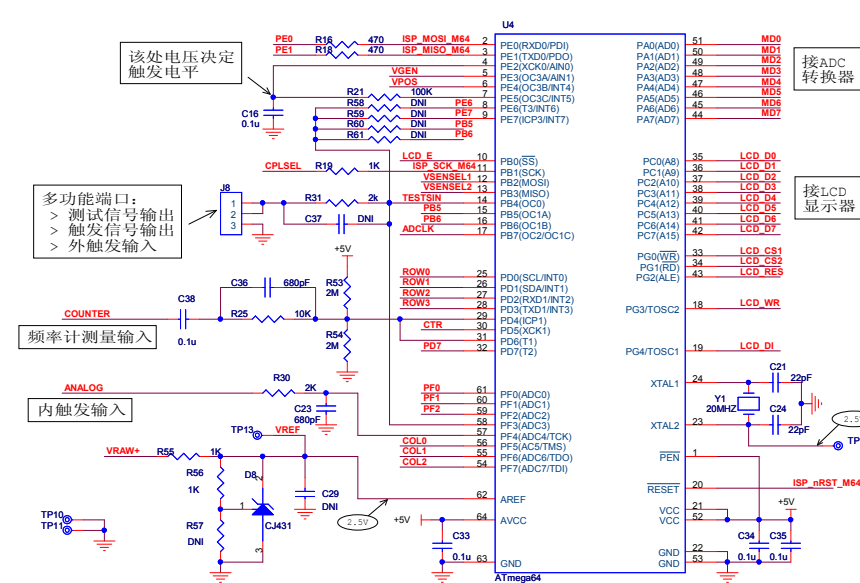
ADC转换器



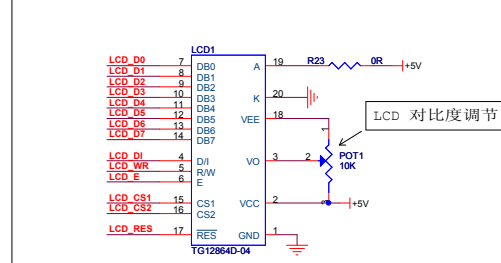
模拟部分正、负电源



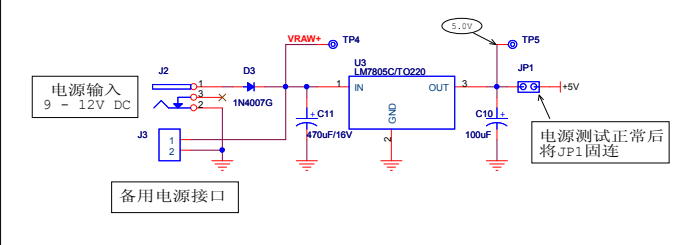
中心控制器



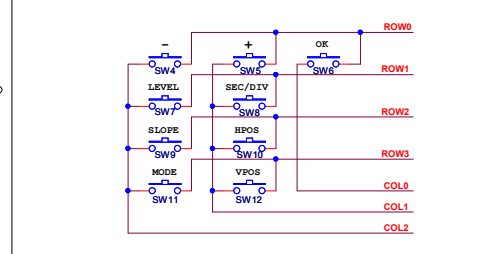
LCD显示



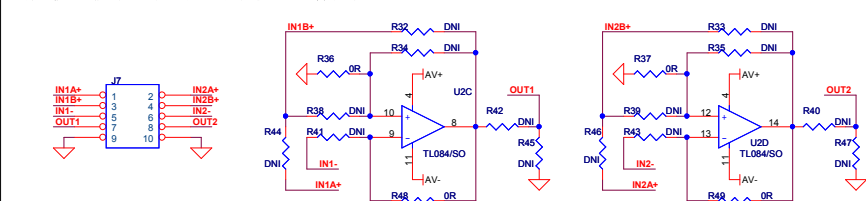
数字部分电源



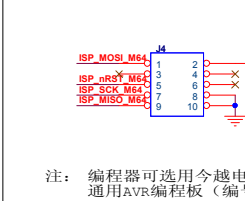
按键电路



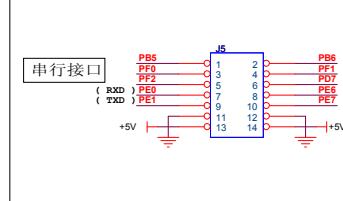
用户模拟扩展 (备用, 与示波器工作无关)



ATmega64编程口



扩展接口 (串口)



今越062数字存储示波器

- 说明:
1. 标为"DNI"的元素不必安装
 2. 实际采用元件数值以材料清单为准
 3. "使用说明"、"安装说明"以及程序代码的下载请访问 WWW.JYETECH.COM

桂林长河电子有限公司
WWW.JYETECH.COM
 Email: jyetek@gmail.com